

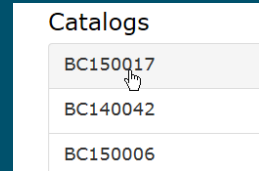
Help Topics – Selecting a Topic

Catalog Home Page – Selecting a Line	1
Functional Elements in the Menu Bar	2
Left-Hand Edge of the Screen: Elements for Navigating and Searching	3
Display and Zoom Functions of the Drawings	4
Shopping Basket – Adding Components and Defining the Transaction	5
Place the Order or Inquire Price	6
Questions / Suggestions	7



Catalog Home Page – Selecting a Line

The lines delivered to your company are listed. Click on a number to go to the catalog for the desired plant.



Click on the horizontal arrows to switch between the lines.



Click on an item number on the drawing or in the list to move to the desired component or to the subassembly.



1
2
3
4
5
6
7



Functional Elements in the Menu Bar

Documents:
Operating instructions
and wiring diagrams in
PDF-format



W1:
Find components with
average wear



W2:
Find components with
high wear

Basket:
List of selected
products for purchase
or price inquiry

The screenshot shows the top navigation bar with icons for Documents, Groups, Help, Basket, Imprint, a language dropdown set to English, and Logout. Below the bar, a technical drawing of a cutting machine is on the left, and a table of parts is on the right.

Pos.	Articlenumber	Description	Quantity
1	10137131	Cutting machine CBMC linear	1 ST
3	10092020	Vacuum diagram	1 ST
7	10097892	Holder for sensor	1 ST
8	10113680	Control system	1 ST

1

2

3

4

5

6

7



Left-Hand Edge of the Screen: Elements for Navigating and Searching



Jumps back to the home screen of the application



Resets a magnified drawing to its original size



Opens the next higher level



Shows or hides the assembly structures



Jumps back to the previous assembly on the same level



Switches between 3 display types for drawing and component list



Jumps to the next assembly on the same level



Search function: Enables searching by part number or by component name

1

2

3

4

5

6

7

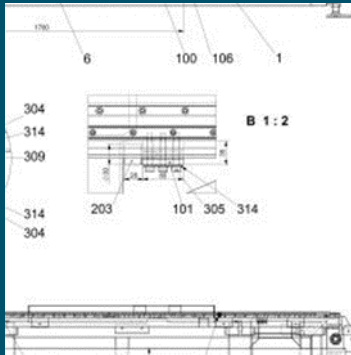


Display and Zoom Functions of the Drawings

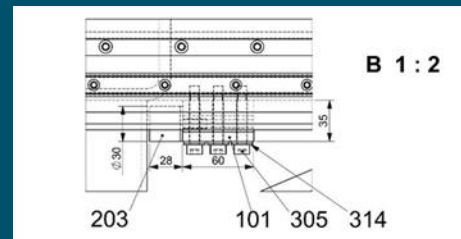
Move the cursor to an item number on the drawing to select the component in the list.

Click on the item number:

- ⇒ You may obtain more information about the component.
- ⇒ If the selected position number refers to an assembly it will take you to the sub-assembly.



Click outside an item number in the drawing to enlarge the display.



1

2

3

4

5

6

7

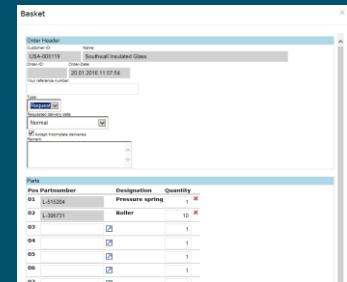
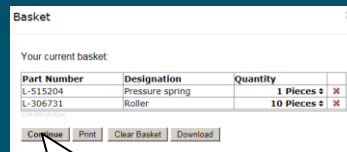
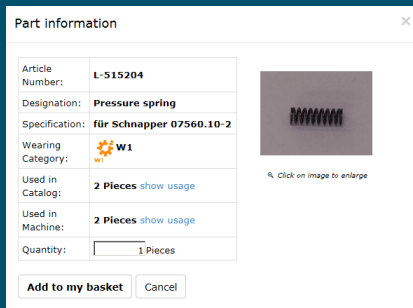


Shopping Basket – Adding Components and Defining the Transaction (Order or Request)

To add a component to the shopping basket:
Click on the symbol «Add to basket».
⇒ The «Part information» window appears.

Click on «Add to my basket».
⇒ The content of the shopping basket is shown.

Click on «Continue». In the next window, you can define the transaction type – Request or Order.



1

2

3

4

5

6

7



Place the Order or Inquire Price

Scroll down to display the «Submit transaction» button.
Click on «Submit transaction».

⇒ The message «Order XXX has been saved» appears.

Click on «Show Order» to display an overview of the order.

⇒ You can print the order or send it to any e-mail address.

Warenkorb

Bestellung anzeigen

Pos	Teilenummer	Bezeichnung	Menge
02	10070496	Mischwelle	1
02	L-515204	Druckfeder	1
03			1
04			1
05			1
06			1
07			1
08			1
09			1
10			1
11			1
12			1

Transaktion durchführen

Warenkorb

Drucken E-Mail-Adresse

Glaston Parts Catalog – Global

glaston
GENUINE CARE

von: übermittelt von:

Katalog-Nr.: 000 03.8.0003-2 agj rietsberg
BPC-Bearbeitungs-Nr.: 00000058
Datum und Uhrzeit: 14.01.2016 13:57:09
Bemerkungen: Info: Es kann so sein: Werktagen angeliefert werden

Teile-Nr.	Bezeichnung	Menge	Einheit	Abbildung	Referenz
10070496	Mischwelle	1	Stück		L-233 0950
L-515204	Druckfeder	1	Stück		L-233 0950

Gewünschter Liefertermin: Innerhalb 1 Woche
Akzeptierte Lieferform: Komplettlieferung oder Teillieferung

Bystronic Lenhardt GmbH
75242 Neuhausen-Hamburg
Deutschland

1

2

3

4

5

6

7



Questions / Suggestions

The catalog has been compiled with great care and we have tried to make its usability intuitive and as easy as possible. Should you still experience any problems, please contact your nearest service partner or:

documentation@glaston.net (Glaston Switzerland AG).

We strive to improve our catalog steadily.

We welcome your praise, criticism and suggestions.

Your Glaston Switzerland Techdoc Team.

1

2

3

4

5

6

7